

Résidence du Belvédère

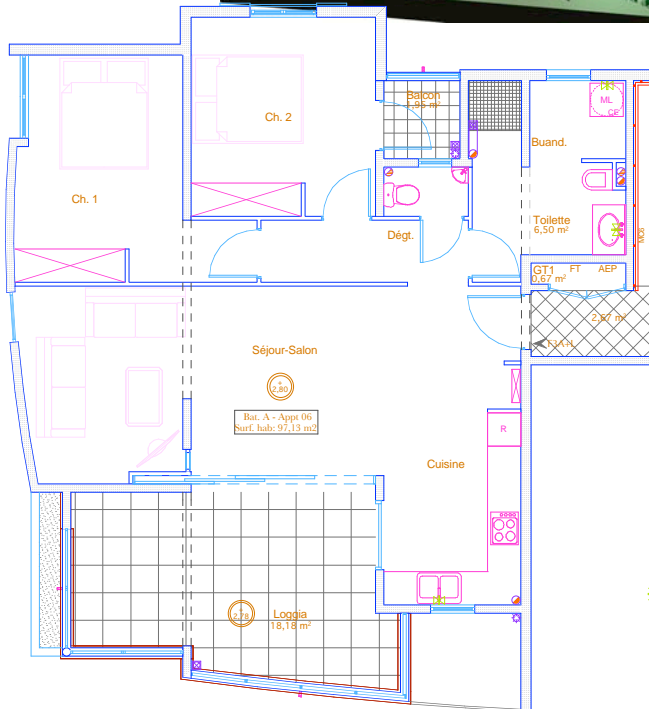
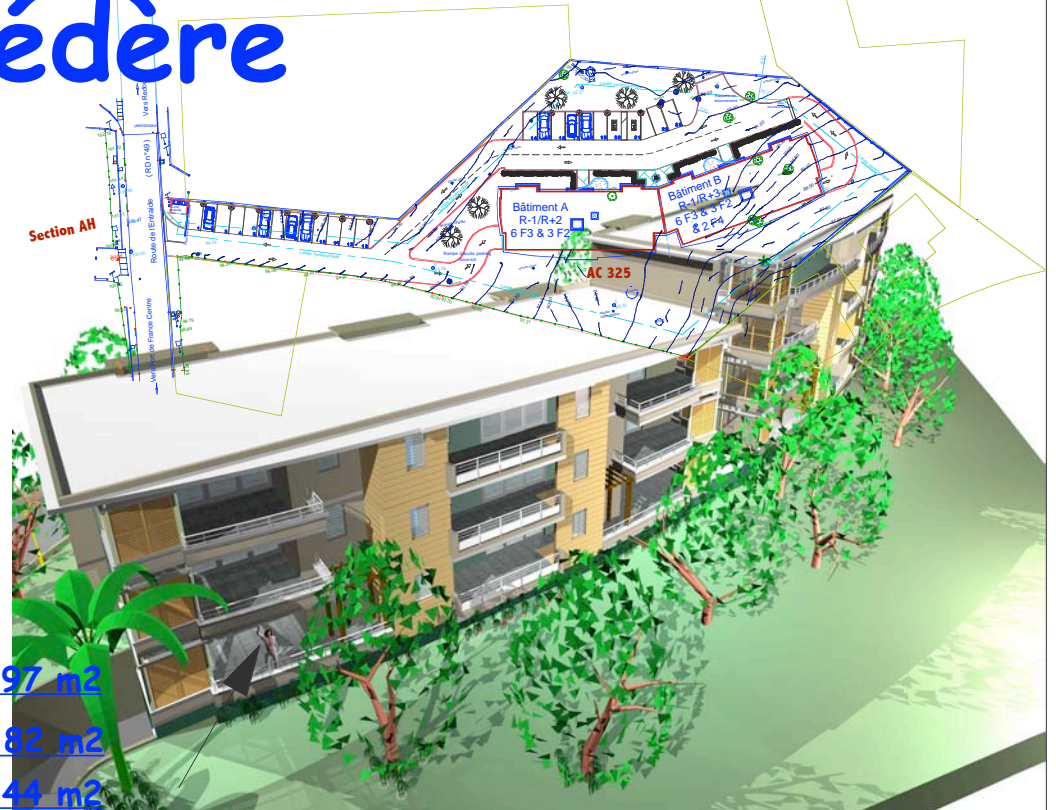
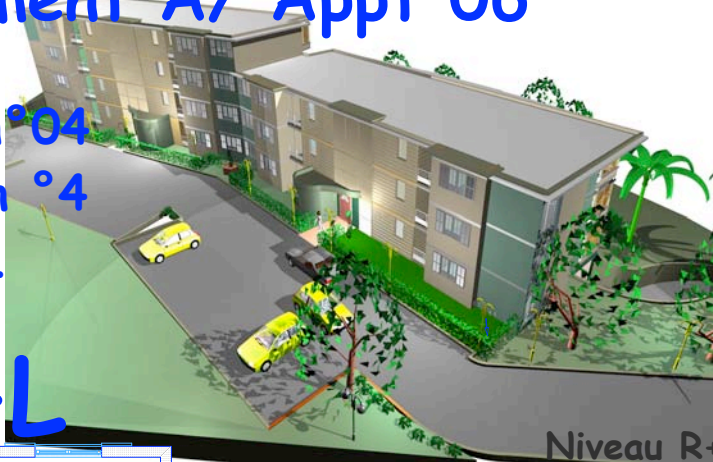
Bâtiment A/ Appt 06

Parking n° 04

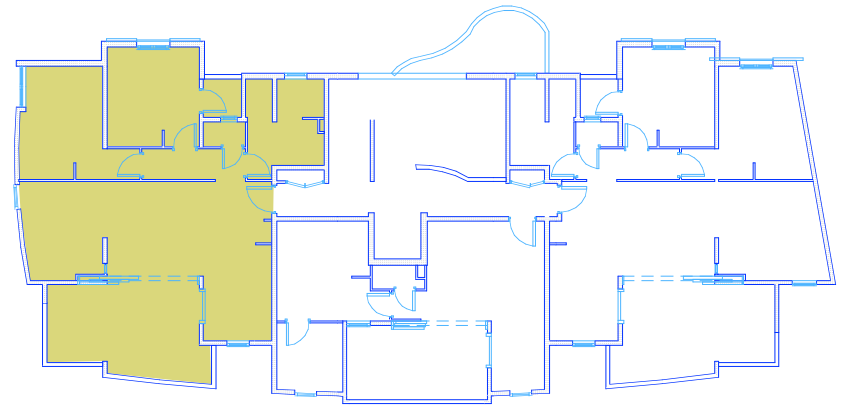
Cave n° 4

PE/21

F3+L



| | |
|------------------|----------------------------|
| Séjour | 27,97 m² |
| Cuisine | 8,82 m² |
| Buanderie | 2,44 m² |
| Chambre 1 | 13,62 m² |
| Chambre 2 | 12,06 m² |
| Toilette | 6,50 m² |
| WC | 1,38 m² |
| Degt | 4,21 m² |
| SH = | 77,00 m² |
| Loggia | 18,18 m² |
| Balcon | 1,95 m² |
| SH+L = | 97,13 m² |



Bâtiment A